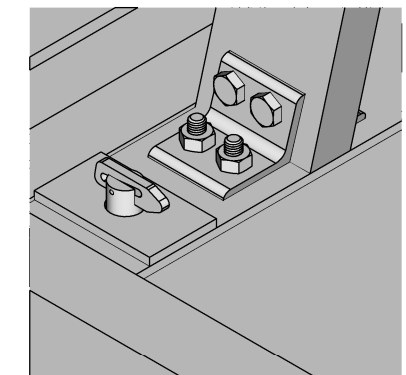
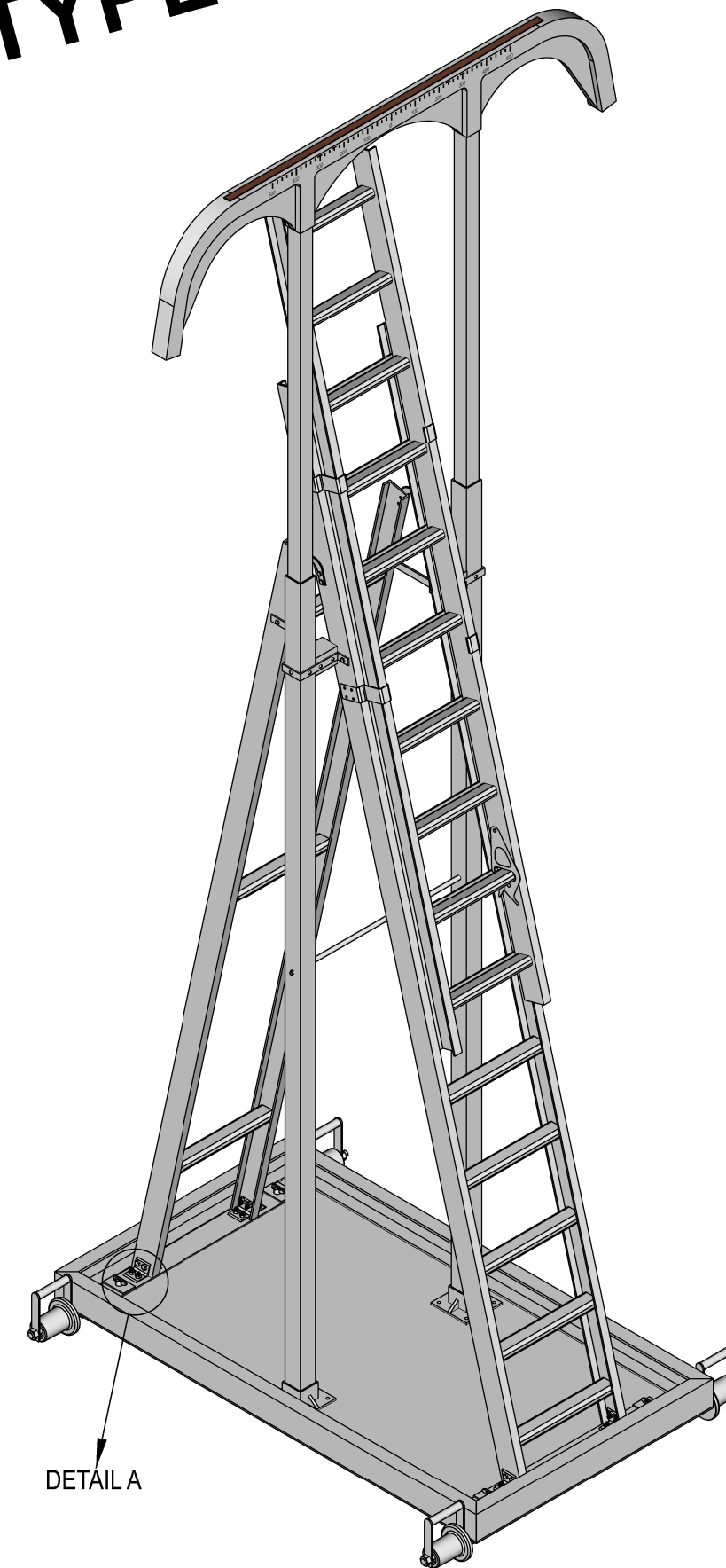


PROTOTYPE



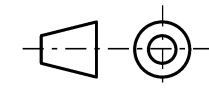
DETAIL A ENLARGED

NOTES

1. This drawing is for tendering purposes only
2. Tolerances:
0 - 100 ±0.5
101 - 500 ±1
501 - 1000 ±3
above 1000 ±5
3. Dimensions taken from trolley floor
4. Refer to SPEC. No. BBG8821
5. It should not be possible to lift one side of the Height and Stagger gauge more than the other side
6. The securing bracket must be rigid

8	SECURING BRACKET	-	-	-
7	HEIGHT GAUGE	-	-	-
6	PANTOGRAPH PROFILE (FIBERGLASS), WITH STAGGER GAUGE & COPPER STRIP INSERT TO SUIT 19E LOCOMOTIVE	-	-	BBH1235 Sht 1
5	TRESTLE TROLLEY, TO SPEC. BBG8821	-	-	-
4	CATCH, EXTENSION LADDER (TO SUITE APPLICATION)	-	-	-
3	GUIDE	-	-	-
2	SUPPORT FOR STAGGER GAUGE	-	-	-
1	EXTESION LADDER (FIBERGLASS), TO SPEC. BBB0868	-	-	-
ITEM NO	DESCRIPTION	QTY	STORES ITEM NO	DRAWING NO

© COPYRIGHT PROTECTED. PREPARED BY CENTRAL DRAWING OFFICE



DIMENSIONS : mm SCALE : 1 : 20
TOLERANCE : LIN ± - ANG ± - ITEM NO : -
MATERIAL : -
VERSION INFO : Sheet 1 added
note 5 and 6 added

DO REF : CDO/ 9569
ECP REF : -
DRAWN : S.M. Mazibuko
DESIGNED : -
CHECKED : -

+ 10/12/2021

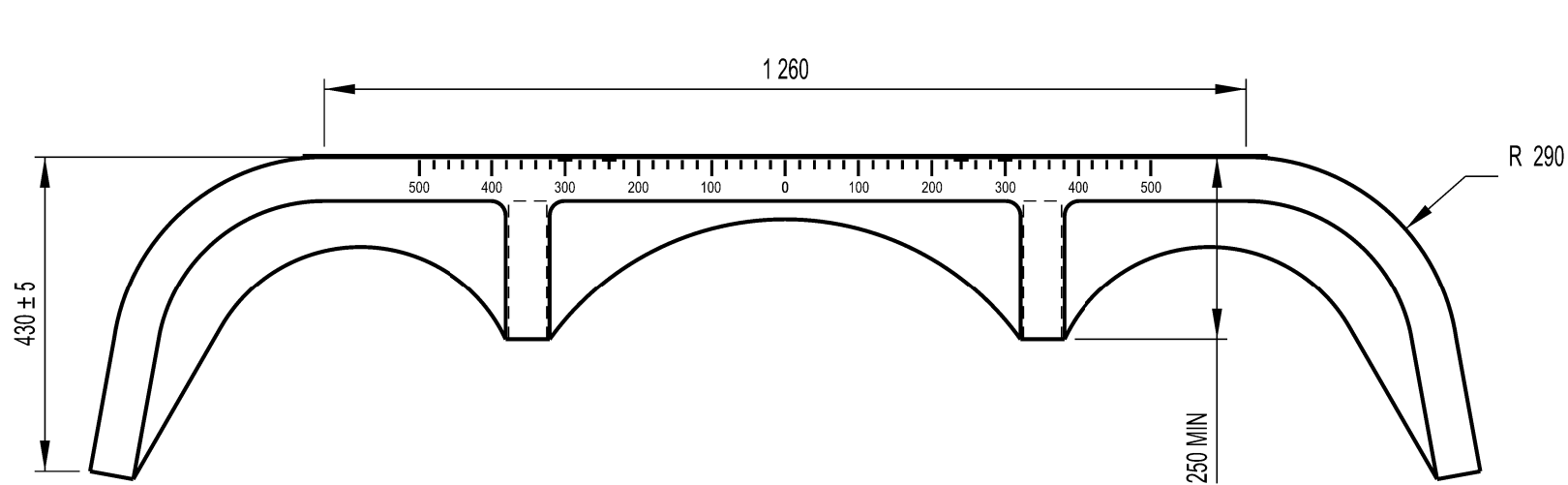
APPROVED W. Schoeman

+ 10/12/2021

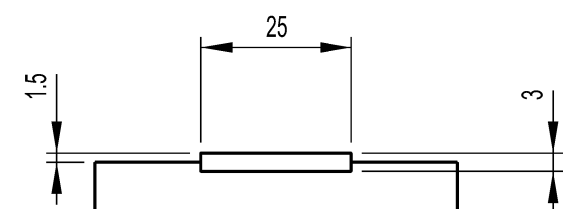
AUTHORISED S. Smit

TRESTLE TROLLEY WITH FIBREGLASS LADDER,
HEIGHT AND STAGGER GAUGE

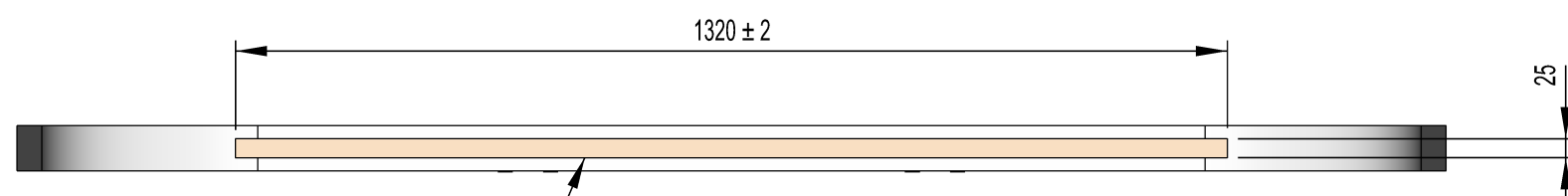
TRANSNET
freight rail
BBH1235
VERSION 2



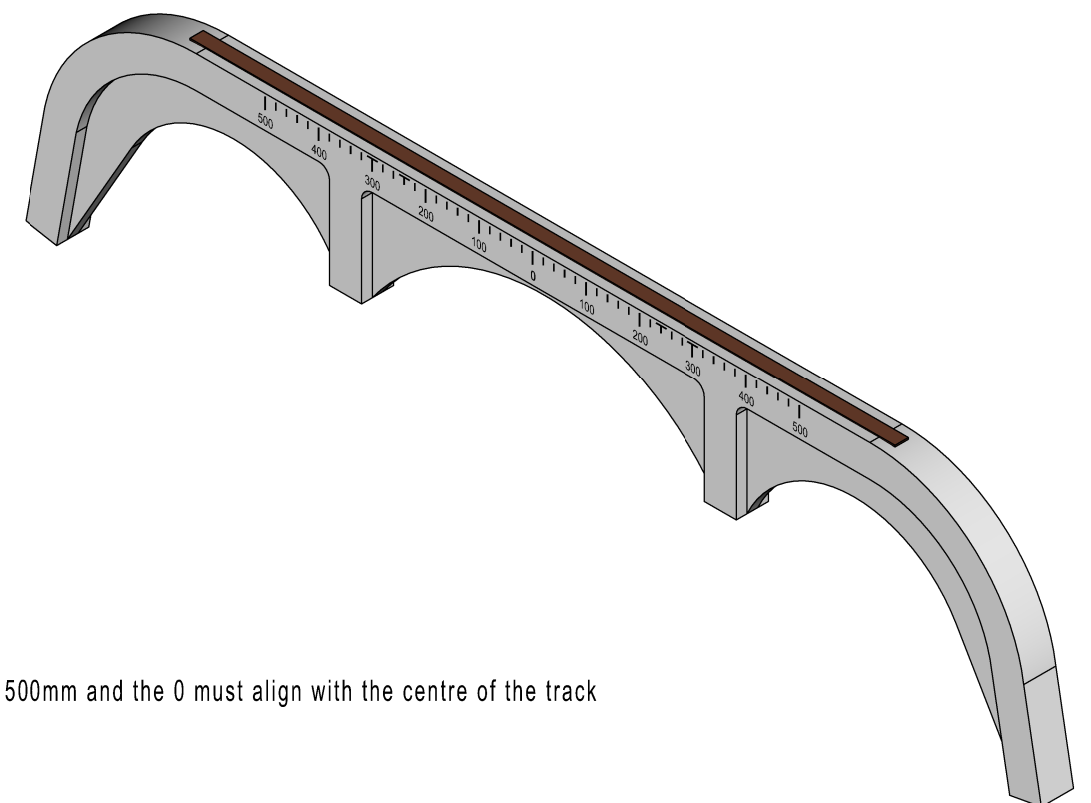
Details A-A



Detail A-A

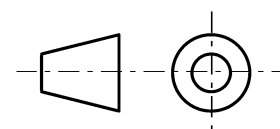


Copper Strip (25 x 3)



NOTES.

1. The measurements must range from 500 to 500mm and the 0 must align with the centre of the track when the trestle is mounted on the track



DIMENSIONS : mm
TOLERANCE : LIN± - ANG± -
MATERIAL : FIBERGLASS

SCALE : 1 : 10

PANTOGRAPH PROFILE
WITH
STAGGER GAUGE & COPPER STRIP INSERT

TRANSNET
freight rail

BBH1235 Sht 1

VERSION 1

A3